

CONTENTS

Contents	1
Forward.....	2
Application.....	2
Specification.....	2
Safety precautions	2
Operator safety while using internal combustion engines.....	3
Service safety	4
Operation	5
Before starting & Operating	5
Starting engine.....	5
Stopping engine	6
User speed.....	6
Transporting.....	8
Storage.....	8
Maintenance schedule	8
Engine maintenance	8
Engine speed	9
Cleaning	9
Diagram	10

FOREWARD

- ◇ For your own safety and protection from bodily injuries, carefully read, understand and follow the safety instructions in this manual.
- ◇ Please operate and maintain your machine in accordance with the instructions in this manual.
- ◇ Defective machine parts are to be replaced as soon as possible.
- ◇ Keep this owner's manual handy, so you can refer to it at any time.
- ◇ No part of this publication may be reproduced without written permission.
- ◇ We expressly reserve the right to technical modifications- even without express due notice - which aim at improving our machines or their safety standards.

APPLICATION

DYNA25B vibration rod adopts unique I-shaped scraper, can let a worker to concrete leveling the ground. Vibration effect can reduce the surface bubbles to form strong and dense concrete ground. It reduced the common scraper required laborious time-consuming work. Has the following features:

- ◇ Filled with soft shaft transmission device, and reduce maintenance costs.
- ◇ The throttle control, manual control of vibration velocity.
- ◇ Armrest, height adjustable, comfortable operation.
- ◇ Scraping board, aluminum board, durable and light weight. Length of 6 meters or less of the scraper, it can meet different customer needs.
- ◇ Good flexibility, easy operation around the small road or obstructions

SPECIFICATION

Weight: 25Kg
Engine: GX35 HONDA
Rev: 8000rpm
Fuel capacity (L): 0.65L
Oil capacity: 0.1L
Blade length: 2500mm
Blade width: 120mm
Overall diameter: 1400×960×2500mm

Recommend oil

USES the API level SE or higher levels of four-stroke engine oil. In the oil container have API scale knowledge. The confirmation SE or higher level of letters.

Usually use: SAE 10W - 30 oil.

Recommended jialing - Honda special gasoline engine oil (SJ10W - 30).

SAFETY PRECAUTIONS

1. Before starting operation, the operator has to check that all control and safety devices function properly.

2. **NEVER** allow anyone to operate this equipment without proper training.

People operating this equipment must be familiar with the risks and hazards associated with it.

3. **NEVER** touch the engine or muffler while the engine is on or immediately after it has been turned off. These areas get hot and may cause burns.

4. **NEVER** operate this machine in applications for which it is not intended.

5. **ALWAYS** wear protective clothing appropriate to the job site when operating equipment.

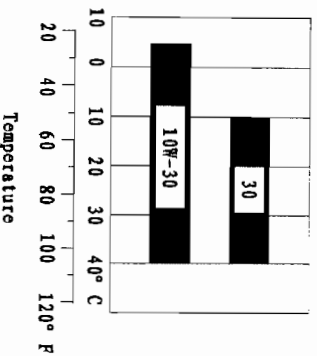
6. **ALWAYS** remain aware of moving parts and keep hands, feet, and loose clothing away from the moving parts of the machine.

7. **ALWAYS** operate the machine with all safety devices and guards in place and in working order.

OPERATOR SAFETY WHILE USING INTERNAL COMBUSTION ENGINES

Danger! Internal combustion engines present special hazards during operation and fueling. Read and follow the warning instructions in the engine owner's manual and the safety guidelines below. Failure to follow the warnings and safety guidelines could result in severe injury or death.

1. **DO NOT** run the machine indoors or in an enclosed area such as a deep trench unless adequate ventilation, through such items as exhaust fans or



hoses, is provided. Exhaust gas from the engine contains poisonous carbon monoxide gas; exposure to carbon monoxide can cause loss of consciousness and may lead to death.

2. **DO NOT** smoke while operating the machine.

3. **DO NOT** smoke when refueling the engine.

4. **DO NOT** refuel a hot or running engine.

5. **DO NOT** refuel the engine near an open flame.

6. **DO NOT** run the engine near open flames.

7. **ALWAYS** refill the fuel tank in a well-ventilated area.

8. **ALWAYS** replace the fuel tank cap after refueling.

9. **ALWAYS** check the fuel lines and the fuel tank for leaks and cracks before starting the engine. Do not run the machine if fuel leaks are present or the fuel lines are loose.

SERVICE SAFETY

Warning! Poorly maintained machines can become a safety hazard! In order for the machine to operate safely and properly over a long period of time, periodic maintenance and occasional repairs are necessary.

1. **DO NOT** attempt to clean or service the machine while it is running. Rotating parts can cause severe injury.

2. **DO NOT** crank a flooded engine with the spark plug removed on gasoline-powered engines. Fuel trapped in the cylinder will squirt out the spark plug opening.

3. **DO NOT** test for spark on gasoline-powered engines if the engine is flooded or the smell of gasoline is present. A stray spark could ignite the fumes.

4. **DO NOT** use gasoline or other types of fuels or flammable solvents to clean parts, especially in enclosed areas. Fumes from fuels and solvents can become explosive.

5. **ALWAYS** keep the area around the muffler free of debris such as leaves, paper, cartons, etc. A hot muffler could ignite the debris and start a fire.

6. **ALWAYS** keep the machine clean and labels legible. Replace all missing

and hard-to-read labels. Labels provide important operating instructions and warn of dangers and hazards.

7. **ALWAYS** check all external fasteners at regular intervals.

8. **ALWAYS** handle blades carefully. The blades can develop sharp edges which can cause serious cuts.

9. **ALWAYS** turn engine off before performing maintenance or making repairs.

OPERATION

BEFORE STARTING & OPERATING

◇ **REMEMBER!** It is the owner's responsibility to communicate information on the safe use and proper operation of this unit to the operators.

◇ Review ALL of the Safety Precautions listed on page 2 of this manual.

◇ Familiarize yourself with the operation of the machine and confirm that all controls function properly.

◇ Know how to STOP the machine in case of an emergency.

◇ Make sure hands, feet, and clothing are at a safe distance from any moving parts.

◇ **OIL LEVEL** - Check the oil level in the engine. For more information see "Lubrication" under the respective engine's "Owners Manual" or the Maintenance section of this manual.

◇ **AIR CLEANER** - Check to ensure element is in good condition and properly installed.

◇ **FUEL SUPPLY** - The engine requires regular grade unleaded gasoline. Use only fresh, clean gasoline. Gasoline containing water or dirt will damage fuel system. Consult engine Owner's Manual for complete fuel specifications.

◇ **FUEL FILTER** - If clogged or damaged, replace.

STARTING ENGINE

1. Press the primer bulb repeatedly until fuel can be seen in the clear plastic return tube.

2. Choke engine if necessary (you may not need to choke a warm engine).

3. Pull starter rope repeatedly until engine starts.

4. If choke was moved to the closed position to start, gradually move it to the open position as the engine warms up.

5. Allow engine to warm up for one or two minutes.

STOPPING ENGINE

1. Move throttle to idle position.

2. Let engine idle for one or two minutes.

3. Key levels according to the operating handle at the end of the off switch.

Warning! Always stop the engine before:

1. Adding fuel.
2. Leaving the equipment unattended for any amount of time.
3. Before making any repairs or adjustments to the machine.

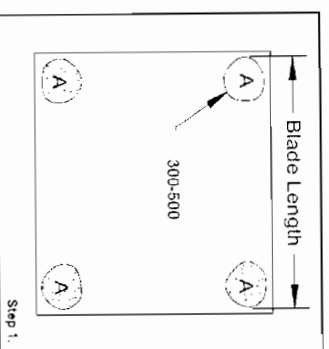
Warning! Never run the Scream above idle when the float blade is not in contact with concrete. This can damage the float blade.

USER SCREED

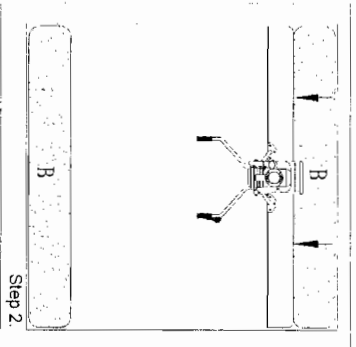
The Scream can be used with or without forms. The following describes the use of the Scream without forms.

1. Use a hand float to make a 300-500mm diameter wet pad (A) at the desired grade in the four corners of the area you wish to screed. The outer extents of the wet pads should not exceed the length of the float blade being used.

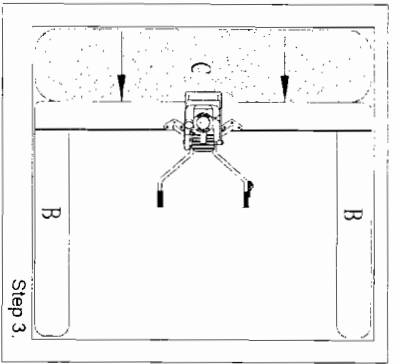
NOTE: Use a laser receiver, transit level, or grade stakes to help establish the correct grade.



- Run the Screed between the wet pads to create two parallel strips (B) that define the grade for the remainder of the wet screeding. These strips should be 300-500 wide.



- Place one end of the float blade on each of the parallel strips (B) and screed the concrete (C) in between the strips. Be sure the float blade follows the contour of the parallel strips



TRANSPORTING

It is recommended to transport the Screed with the float bar removed. The float bar is more likely to be damaged if attached to the main unit during transport.

STORAGE

The following steps should be taken to prepare your Screed for extended storage.

- Close fuel shut off valve.
- Siphon excess gasoline from tank.
- Start engine until it stops from lack of fuel. This will use up all the fuel in the carburetor and prevent formation of deposits due to evaporation of fuel.
- Remove spark plug and pour 2 oz. of SAE-30 or SAE-40 motor oil into the cylinder. Slowly crank the engine 2 or 3 times to distribute the oil throughout the cylinder. This will help prevent rust during storage. Replace spark plug.
- Store the unit in an upright position in a cool, dry, well ventilated area.

MAINTENANCE SCHEDULE

Item	Maintenance	Each use	Every 20 hours	Every 100 hours	Each year
Engine	Refer to engine operator/owner manual	X			
Part	Check and tighten as needed		X		X
Shockmounts	Check for cracks or tears		X		X

ENGINE MAINTENANCE

Refer to the engine owner's manual for maintenance intervals and procedures.

ENGINE SPEED

The idle speed of the engine should not exceed the following:

- Honda - 3500 rpm
- Robin - 2000 rpm

If the idle speed is greater the clutch may not disengage. Check engine owner's manual for procedure on setting idle speed.

CLEANING

Clean any concrete from the Screed immediately after each use. DO NOT allow concrete to harden on the screed.

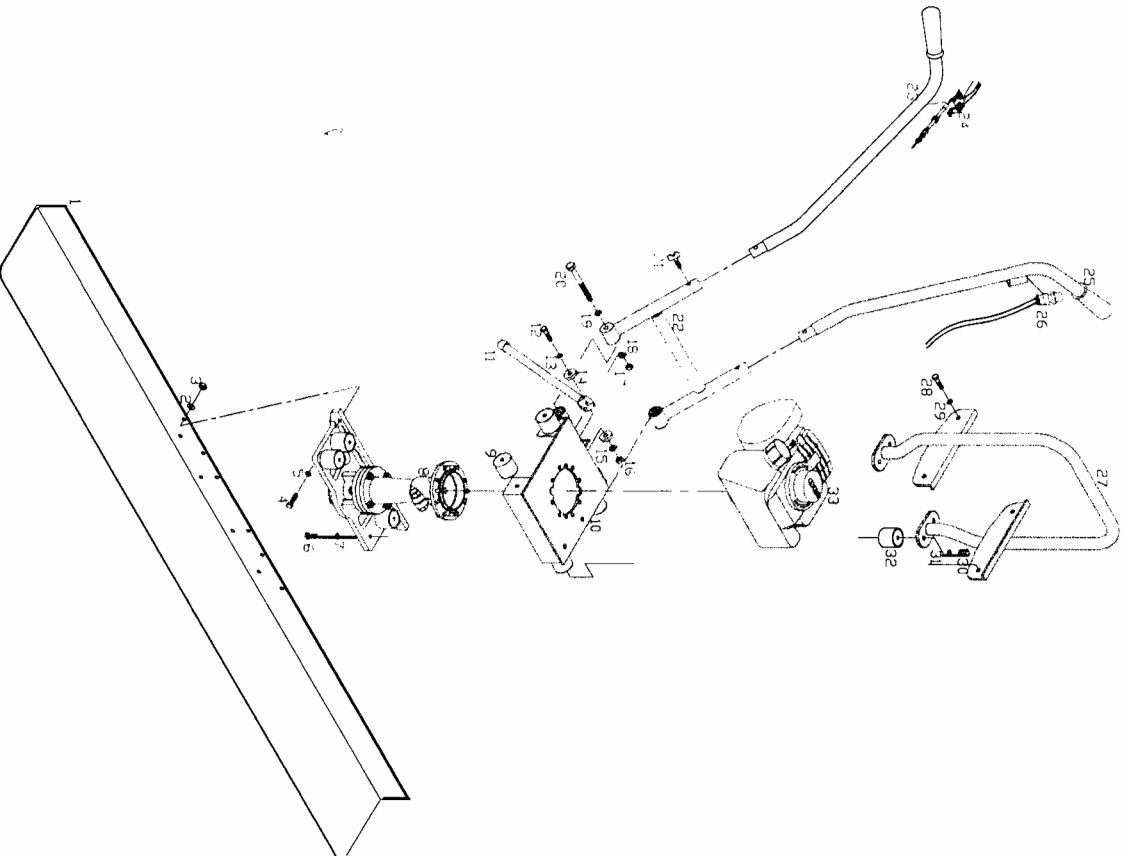
1. Use a hose to remove any excess concrete.
2. Remove any buildup with hard plastic bristle brush.

NOTE: DO NOT use a wire brush, hammer, or pressure washer to remove concrete from the main unit or float blade.

3. Remove the blade.
4. Start engine and run the exciter for about 10 seconds.
5. Shut down the engine.

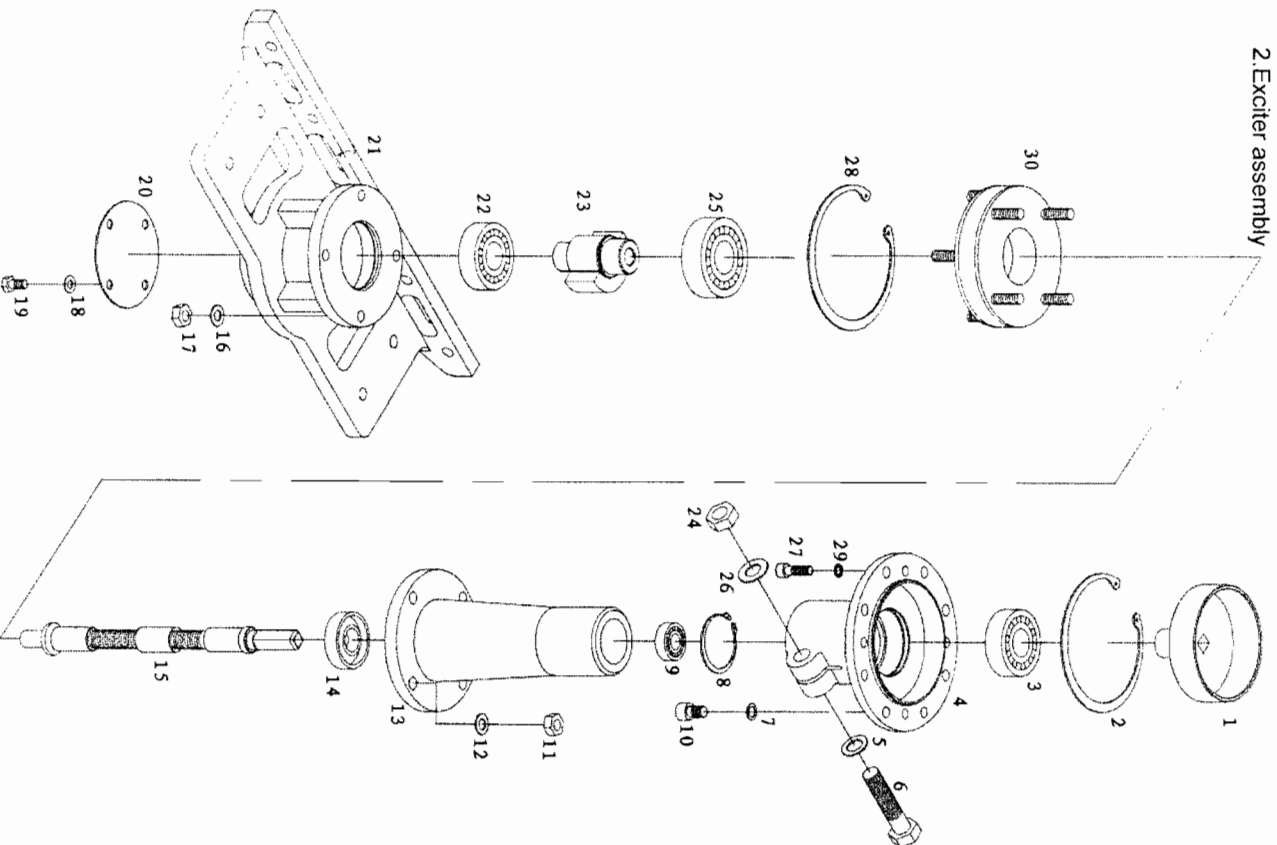
DIAGRAM

1. DYNA25B screed assembly



Item	Part no.	Drawing No.	Part name	Qty
1	1001	VS25B-12	darby	1
2	1002	GB/T95-1985	Washer8	6
3	1003	GB/T6182-2000	Lock Nut M8	6
4	1004	GB/T5783-2000	Blot M8x35	6
5	1005	GB/T95-1985	Washer8	6
6	1006	GB/T5783-2000	Blot M8x20	4
7	1007	GB/T93-1987	Gasket8	4
8	1008	VS25B-01	The excitation system	1
9	1009	VS25B-08	Vibration block	4
10	1010	VS25B-02	engine mounts	1
11	1011	VS25B-11	standing leg	1
12	1012	GB/T5783-2000	Blot M8x35	1
13	1013	GB/T93-1987	Gasket8	1
14	1014	VS25B-09	Vibration block	2
15	1015	GB/T95-1985	Washer8	1
16	1016	GB/T6182-2000	Lock Nut M8	1
17	1017	GB/T6182-2000	Lock Nut M10	2
18	1018	GB/T95-1985	Washer10	2
19	1019	GB/T93-1987	Gasket10	2
20	1020	GB/T5783-2000	Blot M10x90	2
21	1021		Disc screw M8x16	2
22	1022	VS25B-03	handle	1
23	1023	VS25B-05	hand shank B	1
24	1024	VS25B-06-01	Power cord	1
25	1025	VS25B-04-01	hand shank A	1
26	1026		control switch	1
27	1027	VS25B-07	fender bracket	1
28	1028	GB/T5783-2000	Blot M8x16	8
29	1029	GB/T93-1987	Gasket8	8
30	1030	GB/T5783-2000	Blot M8x16	4
31	1031	GB/T93-1987	Gasket8	4
32	1032	VS25B-08	Vibration block	4
33	1033		GX35	1

2. Exciter assembly



Item	Part No.	Drawing No.	Part name	Qty
1	100501	VS25B-01-07	Shaft pin	1
2	100502	GB/T893.1-1986	Retaining ring 47	1
3	100503	GB/T276-1994	Bearing 6204-2RS C3	1
4	100504	VS25B-01-08	Flange	1
5	100505	GB/T93-1987	Gasket12	1
6	100506	GB/T5784-2000	Bolt M12×55	1
7	100507	GB/T93-1987	Gasket8	8
8	100508	GB/T894.1-1986	Retaining ring 20	1
9	100509	GB276-64	Bearing 17×26×5	1
10	100510	GB/T70.1-2000	ScrewM8×16	8
11	100511	GB/T6182-2000	Lock Nut M8	4
12	100512	GB/T95-1985	Washer8	4
13	100513	VS25B-01-05	Flange	1
14	100514	HG4-692-67	Seal 40×17×10	1
15	100515	VS25B-01-06	flexible shaft	1
16	100516	GB/T95-1985	Washer8	4
17	100517	GB/T6182-2000	Lock Nut M8	4
18	100518	GB/T93-1987	Gasket6	4
19	100519	GB/T5783-2000	Bolt M6×12	4
20	100520	VS25B-01-02	Cover	1
21	100521	VS25B-01-03	Exciter mount	1
22	100522	GB/T276-1994	Bearing 6204-2RS C3	1
23	100523	VS25B-01-01	Shaft	1
24	100524	GB/T6182-2000	Lock Nut M12	1
25	100525	GB/T276-1994	Bearing 6205-2RS C3	1
26	100526	GB/T95-1985	Washer12	1
27	100527	GB/T70.1-000	ScrewM6×20	4
28	100528	GB/T893.1-1986	Retaining ring 52	1
29	100529	GB/T93-1987	Gasket6	4
30	100530	VS25B-01-04	Rubber ring	1